

**TABLE OF CONTENTS**

**General requirements:**

Description of Services

Scope of Work

**Section 1: Loose Furnishings**

Unit Price Forms

**Appendices**

Furniture Plan with Key Codes

Specification Paste-Up Sheets

**DESCRIPTION OF SERVICES**

The subsequent list is intended to provide a brief overview of the services that the Owner requests be furnished by the Furniture Contractor. This list shall serve as the basis for this proposal.

**PART 1 PROJECT MANAGEMENT**

- 1.01 Provide comprehensive single point of contact project management capabilities to facilitate the ordering and installation of this furniture package.

**PART 2 PRE-INSTALLATION SERVICES**

- 2.01 Furnish design team with any un-specified material or substitute samples for Owner approval

**PART 3 DESIGN PHASE**

- 3.01 Prepare detailed furniture installation drawings for review and approval by the Owner
- 3.02 Prepare all furniture and component specifications on quotation form for review and approval by Owner
- 3.03 Prepare detailed components list for approval by the Owner
- 3.04 Place all furniture and COM orders

**PART 4 INSTALLATION PHASE**

- 4.01 Provide on bid form if a purchase order(s) will be issued directly to the manufacturer for any items available on the GSA schedule. Provide the pertinent information for each individual manufacturer on a separate sheet with the associated product specifications
- 4.02 Provide on bid form, a separate line item for installation services. Include hourly rates identifying type of service
- 4.03 Provide on bid form, a separate line item freight charges for both furnishings and COM's if applicable
- 4.04 Provide on bid form, Company's Tax ID #

- 4.05            Coordinate with the Owner the preparation of a detailed schedule for installation of furniture
  
- 4.04            Provide/appoint single source, on-site, point of contact for installation team
  
- 4.05            Assume delivery, receipt, inspection and installation of furniture at contractor's warehouse. All product will be brought to site at one time unless coordinated differently with owner. A staging location on site, if required, to be coordinated with Owner. Facility has a loading dock for delivery and unloading only. There is no parking on site.
  
- 4.06            If schedule requires, Contractor will hold products up to 60 days without charge to Owner

**PART 5            POST OCCUPANCY PHASE**

- 5.01            Provide record installation drawings using current AutoCAD software.

END OF SECTION

**SCOPE OF WORK: LOOSE FURNITURE and INSTALLATION SERVICES**

**PART 1        GENERAL**

**1.01        RELATED DOCUMENTS**

- A. Drawings and general provisions of the Contract apply to this section.

**1.02        DESCRIPTION OF WORK**

- A. Furnish and install all furniture, accessories and components as shown on the drawings and as specified herein.
- B. Alternate equal products of quality, style and features will be considered at the Court's discretion for approval. Any substitutes must be clearly noted on bid form.
- C. All product will be provided at best discounted pricing available. This may be based on Open Market or General Services Administration (GSA) schedule if available. GSA contract #'s must be provided for all product bid on the GSA schedule.

**1.03        QUALITY ASSURANCE**

- A. COM's, colors and finishes to be coordinated with the Owner based on level of materials noted and/or specified for each product

**1.04        COORDINATION**

- A. Product descriptions and location drawing with key codes for furniture and accessories are included in the package (See Appendices 1&2)
- C. The Contractor shall be responsible that no labor disputes occur. All damages due to such disputes shall be the sole responsibility of the Contractor.

**1.05        DELIVERY AND PROTECTION**

- A. Deliver materials in protective wrapping and protect from soiling and damage.
- B. The furniture contractor will be responsible for daily clean-up of all materials and removal of all associated waste.

1.06           WARRANTY

- A. All materials and labor shall be warranted for a period of one year after final acceptance or for such longer period as manufacturer's standard warranty permits unless items are damaged through abuse or misuse.
- B. The Contractor shall warrant that the furnishings will in all respects conform to the drawings and specifications and that the furnishings will be free from defects in materials and workmanship. The warranty is in addition to any other warranty required by the Contract Documents.

**PART 2           PRODUCTS**

2.01           SCHEDULE

- A. Furniture and accessories are specified in the schedule and attached drawing.
- B. The Contractor will receive all product at their facility.
- C. The Contractor is responsible for verification of all quantities.
- D. The Contractor will provide a receiving report to Owner upon receipt of product
- E. The Contractor will verify product matches receiving ticket from carrier
- F. The Contractor will perform exterior carton inspection for indications of damage. No damaged goods will be accepted on installation site
- G. The Contractor will coordinate return goods authorizations, freight damage and other claim forms

END OF SECTION

Court of Appeals  
Sixth Circuit  
Potter Stewart Courthouse Cincinnati, Ohio

Furniture Bid Package No.1  
New Furniture and Lighting

UNIT PRICE  
PROPOSAL FORM

**Bidder Name:**

**Bid Submittal Date:**

All furniture unit prices include COMs & COLs. Contractor must verify quantities per attached plans.

Attach any itemized product quotations on dealers own forms if desired.

Additional manufacturers' products with comparable product performance and aesthetic may be accepted for consideration at the discretion of the court

**Manufacturer and Product:**

Item #	Description	Qty	Unit Price per Single Item *includes COM	Total per Quantity	Unit Price Delivery and Installation	Freight Per Manufacturer	Total Product, Delivered, Installed, Freight, COM Freight per Quantity
CH4-2	JSI Madison side chair	2	\$ -	\$ -	\$ -	\$ -	\$ -
CH4-3B	JSI Portrait side chair	6	\$ -	\$ -	\$ -	\$ -	\$ -
CH7-1	HBF Mode swivel chair	6	\$ -	\$ -	\$ -	\$ -	\$ -
CH7-3B	David Edward Legislator Chair	8	\$ -	\$ -	\$ -	\$ -	\$ -
CH8-3	David Edward Clarkson Lounge Chair	2	\$ -	\$ -	\$ -	\$ -	\$ -
CH9-3	David Edward Clarkson Sofa	2	\$ -	\$ -	\$ -	\$ -	\$ -
CH13	Bernhardt Blaine Lounge Chair	4	\$ -	\$ -	\$ -	\$ -	\$ -
CH14	Bernhardt Blaine Sofa	1	\$ -	\$ -	\$ -	\$ -	\$ -
CT1-2	Gunlocke Kennsington conference table	1	\$ -	\$ -	\$ -	\$ -	\$ -
CTI-2A	JSI Wellington conference table	1	\$ -	\$ -	\$ -	\$ -	\$ -
T1-3B	David Edward Aussie end table	1	\$ -	\$ -	\$ -	\$ -	\$ -

Court of Appeals  
Sixth Circuit  
Potter Stewart Courthouse Cincinnati, Ohio

Furniture Bid Package No.1  
New Furniture and Lighting

UNIT PRICE  
PROPOSAL FORM

**Bidder Name:**

**Bid Submittal Date:**

All furniture unit prices include COMs & COLs. Contractor must verify quantities per attached plans.  
Attach any itemized product quotations on dealers own forms if desired.

<b>T3-3</b>	Cabot Wren Mystique square end table	5	\$ -	\$ -	\$ -	\$ -	\$ -
<b>T3-3A</b>	Cabot Wren Mystique coffee table	1	\$ -	\$ -	\$ -	\$ -	\$ -
<b>CT-3</b>	Cabot Wren Mystique console table	2	\$ -	\$ -	\$ -	\$ -	\$ -
<b>CR-3B</b>	Gunlocke Kennsington credenza	1	\$ -	\$ -	\$ -	\$ -	\$ -
<b>D1-3B</b>	Gunlocke Kennsington judges desk/workstation	1	\$ -	\$ -	\$ -	\$ -	\$ -
<b>D1-3B1</b>	Gunlocke Kennsington assistant desk/workstation	2	\$ -	\$ -	\$ -	\$ -	\$ -
<b>L1-C</b>	Uttermost table lamp	2	\$ -	\$ -	\$ -	\$ -	\$ -
<b>L2-C</b>	Uttermost table lamp	1	\$ -	\$ -	\$ -	\$ -	\$ -
<b>L4-C</b>	Uttermost floor lamp	1	\$ -	\$ -	\$ -	\$ -	\$ -
<b>L1-TR</b>	Uttermost table lamp	2	\$ -	\$ -	\$ -	\$ -	\$ -
<b>L2-TR</b>	Uttermost table lamp	2	\$ -	\$ -	\$ -	\$ -	\$ -
<b>L4-TR</b>	Uttermost floor lamp	2	\$ -	\$ -	\$ -	\$ -	\$ -

<b>Total Product Only</b>			\$ -			

<b>Grand Total</b>						\$ -
<b>Product, Delivery, Installation and Freight</b>						

**Bidder Name Address and Phone Number:**

**Contact Name and email Address:**

**Bid Submittal Date:**

1. LOOSE FURNITURE					
Manufacturer/ Description	Total Mfr. Product Costs	Total Mfr. Overall Freight	Total per Mfr.	GSA Contract # (if applicable)	Lead Time
Bernhardt Design	\$ -	\$ -	\$ -		
Cabot Wren	\$ -	\$ -	\$ -		
David Edward	\$ -	\$ -	\$ -		
Gunlocke	\$ -	\$ -	\$ -		
HBF	\$ -	\$ -	\$ -		
JSI	\$ -	\$ -	\$ -		
<b>Dealership</b>					
Uttermost Product Total			\$ -		
COM Total *from COM Cost Form			\$ -		
COM Freight Charges			\$ -		
Installation and Delivery			\$ -		
Total Dealership			\$ -		
<b>Total Project</b>					
Material, Installation, Freight			\$ -		
<b>Tax ID #</b>					



**Bidder Name:**  
**Bid Submittal Date:**

COM Cost Form for US Courts reference only COM costs should be included with Furniture Unit Price Form

**COM Cost Form:**

Item #	Description	COM Unit Price per Yard	Total Yards Required (all furniture units)	Total Freight Charges per COM	Total Cost Per COM
CH4-2	Pollack: Latitude color: Midnight Sky	\$ -	0	0	\$ -
CH4-3B	HBF Textiles: Pivot color : Chocolate Mint 690-39	\$ -	0	0	\$ -
CH7-1	Knoll Textiles: Lagos color: Tilapia K2028/5	\$ -	0	0	\$ -
CH7-3B	Pallas Textiles: Stipple color : Deep Mulberry 27-241-114	\$ -	0	0	\$ -
CH8-3	Joseph Noble: Resort color: Macau 2850-03	\$ -	0	0	\$ -
CH9-3	Joseph Noble: Dapper color: Mayfield 3150-07	\$ -	0	0	\$ -
CH13	Brentano: Pompadour color: Louis Heels 7442-03	\$ -	0	0	\$ -
CH14	Bernhardt Textiles: Current color: Haze	\$ -	0	0	\$ -

Court of Appeals  
Sixth Circuit  
Potter Stewart Courthouse Cincinnati, Ohio

Furniture Bid Package No.1  
Purchase Order Issue Form

**Bid Submittal Date:**

**PROPOSAL FORM ATTACHMENT**

\*\*Provide a separate sheet for each Manufacturer or Dealership

Purchase Order Issue Information		
	<b>Company Name:</b>	
	<b>Address:</b>	
	<b>Email Address:</b>	
	<b>Contact Name:</b>	
	<b>Contact Phone Number:</b>	
	<b>GSA Contract # (if applicable)</b>	
	<b>Total Project Cost (Per Manufacturer or Dealership) for Purchase Order</b>	

Court of Appeals  
Sixth Circuit  
Potter Stewart Courthouse Cincinnati, Ohio

Furniture Bid Package No.1  
Warehouse Delivery

**Bid Submittal Date:**

**PROPOSAL FORM ATTACHMENT**

\*\*Provide a separate sheet for each Warehouse Location if more than one

Warehouse Delivery Information		
	<b>Company Name:</b>	
	<b>Address:</b>	
	<b>Email Address:</b>	
	<b>Contact Name:</b>	
	<b>Contact Phone Number:</b>	
	<b>Special Instructions:</b>	



PLAN CODE: CH8-3-F2-3  
 MANUFACTURER: DAVID EDWARD  
 MODEL #: 42413 CLARKSON LOUNGE  
 SIZE: D33.5", H36", AH24.25", SH18",  
 SD21.5", W30.25"  
 QUANTITY: 2  
 FINISH: # 21 LIGHT CHERRY ON CHERRY  
 OPTIONS: N/A  
 COM YARDAGE: 7.75 YDS (EA) + manufacturer  
 recommended repeat overage

DESCRIPTION: COM UPHOLSTERY  
 MANUFACTURER: JOSEPH NOBLE  
 STYLE: RESORT 2850  
 COLOR: MACAU 03  
 CONTENT: 100% POLYESTER, 42,000  
 DOUBLE RUBS, 57.5" WIDTH,  
 STAIN RESISTANT FINISH  
 VERTICAL REPEAT: 9"  
 HORIZONTAL REPEAT: 4.88"

## UNITED STATES COURT OF APPEALS FOR THE SIXTH CIRCUIT

503 POTTER STEWART COURTHOUSE  
 100 EAST FIFTH STREET  
 CINCINNATI, OHIO 45202-3988

ISSUE DATE: SEPTEMBER 1, 2016

## MSA Architects

CINCINNATI  
 316 West Fourth Street  
 Floor 6  
 Cincinnati, Ohio 45202  
 513.241.5666

Toll Free 855.241.5666

COLUMBUS  
 580 North Fourth Street  
 Suite 250  
 Columbus, OH 43215  
 614.300.3357

[www.msaarch.com](http://www.msaarch.com)



PLAN CODE: CH9-3-F1-3  
 MANUFACTURER: DAVID EDWARD  
 MODEL #: 42415 CLARKSON SETTEE  
 SIZE: D33.5", H36", AH24.25", SH18",  
 SD21.5", W52"  
 QUANTITY: 2  
 FINISH: # 21 LIGHT CHERRY ON CHERRY  
 N/A  
 OPTIONS:  
 COM YARDAGE: 15 YDS (EA) + include manufacturer  
 recommended repeat overage

DESCRIPTION: COM UPHOLSTERY  
 MANUFACTURER: JOSEPH NOBLE  
 STYLE: DAPPER 3150  
 COLOR: MAYFIELD 07  
 CONTENT: 100% BLEACH CLEANABLE  
 POLYESTER, 60,000 DOUBLE  
 RUBS, 57.5" WIDTH, STAIN  
 RESISTANT FINISH  
 VERTICAL REPEAT: N/A  
 HORIZONTAL REPEAT: 0.75"

## UNITED STATES COURT OF APPEALS FOR THE SIXTH CIRCUIT

503 POTTER STEWART COURTHOUSE  
 100 EAST FIFTH STREET  
 CINCINNATI, OHIO 45202-3988

ISSUE DATE: SEPTEMBER 1, 2016

## **MSA** Architects

CINCINNATI  
 316 West Fourth Street  
 Floor 6  
 Cincinnati, Ohio 45202  
 513.241.5666

Toll Free 855.241.5666

COLUMBUS  
 580 North Fourth Street  
 Suite 250  
 Columbus, OH 43215  
 614.300.3357

[www.msaarch.com](http://www.msaarch.com)



PLAN CODE: CH13-F5-3  
 MANUFACTURER: BERNHARDT  
 MODEL #: BLAINE CHAIR 6458  
 SIZE: SH17.75", AH22.5", W29.5", D31", H33"  
 QUANTITY: 4  
 FINISH: MAPLE BASE 839 FINISH  
 OPTIONS: NONE  
 COM YARDAGE: 6.8 YDS (EA) + include  
 manufacturer recommended repeat  
 overage

DESCRIPTION: COM UPHOLSTERY  
 MANUFACTURER: BRENTANO  
 STYLE: POMPADOUR 7442  
 COLOR: LOUIS HEELS 03  
 CONTENT: 47% POLYESTER, 53% ACRYLIC,  
 50,000 DOUBLE RUBS, 54" WIDTH,  
 CRYPTON FINISH  
 VERTICAL REPEAT: 12.-1/2"  
 HOTIZONTAL REPEAT: 14 -5/8"

## UNITED STATES COURT OF APPEALS FOR THE SIXTH CIRCUIT

503 POTTER STEWART COURTHOUSE  
 100 EAST FIFTH STREET  
 CINCINNATI, OHIO 45202-3988

ISSUE DATE: SEPTEMBER 1, 2016

## **MSA** Architects

CINCINNATI  
 316 West Fourth Street  
 Floor 6  
 Cincinnati, Ohio 45202  
 513.241.5666

Toll Free 855.241.5666

COLUMBUS  
 580 North Fourth Street  
 Suite 250  
 Columbus, OH 43215  
 614.300.3357

[www.msaarch.com](http://www.msaarch.com)





PLAN CODE: CH14-F8-7  
 MANUFACTURER: BERNHARDT  
 MODEL #: BLAINE SOFA 6465  
 SIZE: SH17.75", AH22.5", W72", D31", H33"  
 QUANTITY: 1  
 FINISH: MAPLE BASE 839 FINISH  
 OPTIONS: NONE  
 COM YARDAGE: 11.25 YDS (EA) + include manufacturer recommended repeat overage

DESCRIPTION: COM UPHOLSTERY  
 MANUFACTURER: BERNHARDT TEXTILES  
 STYLE: CURRENT 3429  
 COLOR: HAZE 943  
 CONTENT: 100% SOLUTION DYED, 100,000 DOUBLE RUBS, 54" WIDTH, NANOTEX FINISH  
 VERTICAL REPEAT: 10.25"  
 HORIZONTAL REPEAT: 5.25"

## UNITED STATES COURT OF APPEALS FOR THE SIXTH CIRCUIT

503 POTTER STEWART COURTHOUSE  
 100 EAST FIFTH STREET  
 CINCINNATI, OHIO 45202-3988

ISSUE DATE: SEPTEMBER 1, 2016

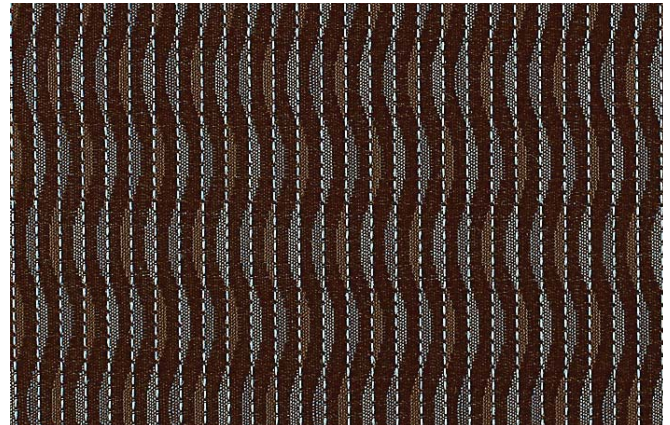
## MSA Architects

CINCINNATI  
 316 West Fourth Street  
 Floor 6  
 Cincinnati, Ohio 45202  
 513.241.5666

Toll Free 855.241.5666

COLUMBUS  
 580 North Fourth Street  
 Suite 250  
 Columbus, OH 43215  
 614.300.3357

[www.msaarch.com](http://www.msaarch.com)



PLAN CODE: CH4-3B-F8-6  
 MANUFACTURER: JSI  
 MODEL #: PORTRAIT P09030  
 SIZE: D25.5", W23", H35", SH19", AH25", SD17.5"  
 QUANTITY: 6  
 FINISH: LEGACY LGC  
 OPTIONS: NONE  
 COM YARDAGE: 2 YDS (EA) + include manufacturer recommended repeat overage

DESCRIPTION: COM UPHOLSTERY  
 MANUFACTURER: HBF TEXTILES  
 STYLE: PIVOT 690  
 COLOR: CHOCOLATE MINT 39  
 CONTENT: 54% POLYESTER, 25% POST-CONSUMER, 21% PRE-CONSUMER RECYCLED POLYESTER, 70,000 DOUBLE RUBS, 58" WIDTH, CRYPTON FINISH  
 VERTICAL REPEAT: 1-3/8"  
 HORIZONTAL REPEAT: 3/4"

## UNITED STATES COURT OF APPEALS FOR THE SIXTH CIRCUIT

503 POTTER STEWART COURTHOUSE  
 100 EAST FIFTH STREET  
 CINCINNATI, OHIO 45202-3988

ISSUE DATE: SEPTEMBER 1, 2016

## **MSA** Architects

CINCINNATI  
 316 West Fourth Street  
 Floor 6  
 Cincinnati, Ohio 45202  
 513.241.5666

Toll Free 855.241.5666

COLUMBUS  
 580 North Fourth Street  
 Suite 250  
 Columbus, OH 43215  
 614.300.3357

[www.msaarch.com](http://www.msaarch.com)





PLAN CODE: CH4-2-F3-3  
 MANUFACTURER: JSI  
 MODEL #: MADISON MA1501J  
 SIZE: D27.5", W26.5", H40.5", SH18.75", AH25.5"  
 QUANTITY: 2  
 FINISH: LEGACY LGC  
 OPTIONS: ANTIQUE BRASS NAIL TRIM  
 COM YARDAGE: 2.5 YDS (EA) +include manufacturer recommended repeat overage

DESCRIPTION: COM UPHOLSTERY  
 MANUFACTURER: POLLACK  
 STYLE: LATITUDE 2377  
 COLOR: MIDNIGHT SKY 09  
 CONTENT: 68% POLYESTER, 32% NYLON, 100,000 DOUBLE RUBS, 54.25" WIDTH, STAIN RESISTANT FINISH REPEAT: 5-3/8" HIGH

## UNITED STATES COURT OF APPEALS FOR THE SIXTH CIRCUIT

503 POTTER STEWART COURTHOUSE  
 100 EAST FIFTH STREET  
 CINCINNATI, OHIO 45202-3988

ISSUE DATE: SEPTEMBER 1, 2016

## **MSA** Architects

CINCINNATI  
 316 West Fourth Street  
 Floor 6  
 Cincinnati, Ohio 45202  
 513.241.5666

Toll Free 855.241.5666

COLUMBUS  
 580 North Fourth Street  
 Suite 250  
 Columbus, OH 43215  
 614.300.3357

[www.msaarch.com](http://www.msaarch.com)



PLAN CODE: CH7-1-F3-3

MANUFACTURER: HBF

MODEL #: MODE HSW206-011 MID BACK

SIZE: H36", W26.5", D23", AH25", SH18"

QUANTITY: 6

FINISH: POLISHED ALUMINUM BASE

OPTIONS: POLISHED ALUMINUM ARM,  
BLACK URETHANE ARM CAP

COM YARDAGE: 2 YDS (EA) + include manufacturer  
recommended repeat overage

DESCRIPTION: COM UPHOLSTERY

MANUFACTURER: KNOLL TEXTILES

STYLE: LAGOS K20285

COLOR: TILAPIA

CONTENT: 77% POLYESTER, 23% NYLON,  
100,000 DOUBLE RUBS, 53"  
WIDTH, STAIN REPELLANT FINISH

Note on PO:  
\*Textile has been tested and  
approved for Mode chair - 35%  
additional yardage required for  
pattern repeat

## UNITED STATES COURT OF APPEALS FOR THE SIXTH CIRCUIT

503 POTTER STEWART COURTHOUSE  
100 EAST FIFTH STREET  
CINCINNATI, OHIO 45202-3988

ISSUE DATE: SEPTEMBER 1, 2016

## **MSA** Architects

CINCINNATI  
316 West Fourth Street  
Floor 6  
Cincinnati, Ohio 45202  
513.241.5666

Toll Free 855.241.5666

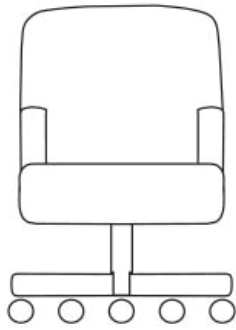
COLUMBUS  
580 North Fourth Street  
Suite 250  
Columbus, OH 43215  
614.300.3357

[www.msaarch.com](http://www.msaarch.com)

# FURNITURE SPECIFICATION

CH7-3B-F4-3

ARM STYLE



BASE STYLE



PLAN CODE: CH7-3B-F4-3  
 MANUFACTURER: DAVID EDWARD  
 MODEL #: LEGISLATOR 50253  
 SIZE: W23", D28", H35", AH22.75", SH17.5", SD18.75"  
 QUANTITY: 8  
 FINISH: # 21 LIGHT CHERRY ON CHERRY  
 OPTIONS: C BASE - 5 PRONG CHERRY  
 COM YARDAGE: 3.25 YDS (EA) + include manufacturer recommended repeat overage

DESCRIPTION: COM UPHOLSTERY  
 MANUFACTURER: PALLAS  
 STYLE: STIPPLE  
 COLOR: DEEP MULBERRY  
 CONTENT: 100% POLYURETHANE, 100,000 DOUBLE RUBS, 54" WIDTH

## UNITED STATES COURT OF APPEALS FOR THE SIXTH CIRCUIT

503 POTTER STEWART COURTHOUSE  
100 EAST FIFTH STREET  
CINCINNATI, OHIO 45202-3988

ISSUE DATE: SEPTEMBER 1, 2016

## MSA Architects

CINCINNATI  
316 West Fourth Street  
Floor 6  
Cincinnati, Ohio 45202  
513.241.5666

Toll Free 855.241.5666

COLUMBUS  
580 North Fourth Street  
Suite 250  
Columbus, OH 43215  
614.300.3357

[www.msaarch.com](http://www.msaarch.com)





PLAN CODE: T1-3B

MANUFACTURER: DAVID EDWARD

MODEL #: AUSSIE END TABLE 11T22

SIZE: W24", D24", H22"

QUANTITY: 1

FINISH: # 21 LIGHT CHERRY ON CHERRY  
NONE

OPTIONS:

UNITED STATES COURT OF APPEALS  
FOR THE SIXTH CIRCUIT

503 POTTER STEWART COURTHOUSE  
100 EAST FIFTH STREET  
CINCINNATI, OHIO 45202-3988

ISSUE DATE: SEPTEMBER 1, 2016

**MSA** Architects

CINCINNATI  
316 West Fourth Street  
Floor 6  
Cincinnati, Ohio 45202  
513.241.5666

Toll Free 855.241.5666

COLUMBUS  
580 North Fourth Street  
Suite 250  
Columbus, OH 43215  
614.300.3357

[www.msaarch.com](http://www.msaarch.com)



PLAN CODE: T3-3

MANUFACTURER: CABOT WRENN

MODEL #: MS252521 MYSTIQUE END TABLE

SIZE: W25", D25", H21"

QUANTITY: 5

FINISH: LIGHT WALNUT

OPTIONS: TOP STYLE: A TOP

COM YARDAGE: N/A

UNITED STATES COURT OF APPEALS  
FOR THE SIXTH CIRCUIT

503 POTTER STEWART COURTHOUSE  
100 EAST FIFTH STREET  
CINCINNATI, OHIO 45202-3988

ISSUE DATE: SEPTEMBER 1, 2016

**MSA** Architects

CINCINNATI  
316 West Fourth Street  
Floor 6  
Cincinnati, Ohio 45202  
513.241.5666

Toll Free 855.241.5666

COLUMBUS  
580 North Fourth Street  
Suite 250  
Columbus, OH 43215  
614.300.3357

[www.msaarch.com](http://www.msaarch.com)



PLAN CODE: T3-3A

MANUFACTURER: CABOT WRENN

MODEL #: MR422016 MYSTIQUE COCKTAIL  
TABLE

SIZE: W42", D20", H16"

QUANTITY: 1

FINISH: LIGHT WALNUT

OPTIONS: TOP STYLE: A TOP

COM YARDAGE: N/A

UNITED STATES COURT OF APPEALS  
FOR THE SIXTH CIRCUIT

503 POTTER STEWART COURTHOUSE  
100 EAST FIFTH STREET  
CINCINNATI, OHIO 45202-3988

ISSUE DATE: SEPTEMBER 1, 2016

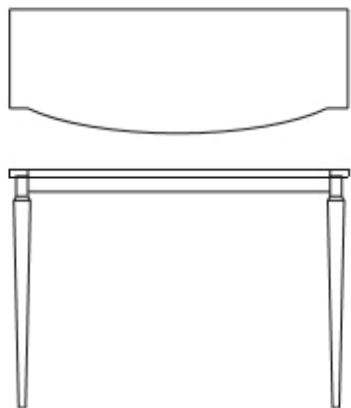
**MSA** Architects

CINCINNATI  
316 West Fourth Street  
Floor 6  
Cincinnati, Ohio 45202  
513.241.5666

Toll Free 855.241.5666

COLUMBUS  
580 North Fourth Street  
Suite 250  
Columbus, OH 43215  
614.300.3357

[www.msaarch.com](http://www.msaarch.com)



PLAN CODE: CT-3

MANUFACTURER: CABOT WRENN

MODEL #: MD541829 MYSTIQUE CONSOLE TABLE

SIZE: W54", D18", H29"

QUANTITY: 2

FINISH: LIGHT WALNUT

OPTIONS: TOP STYLE: A TOP

COM YARDAGE: N/A

## UNITED STATES COURT OF APPEALS FOR THE SIXTH CIRCUIT

503 POTTER STEWART COURTHOUSE  
100 EAST FIFTH STREET  
CINCINNATI, OHIO 45202-3988

ISSUE DATE: SEPTEMBER 1, 2016

## **MSA** Architects

CINCINNATI  
316 West Fourth Street  
Floor 6  
Cincinnati, Ohio 45202  
513.241.5666

Toll Free 855.241.5666

COLUMBUS  
580 North Fourth Street  
Suite 250  
Columbus, OH 43215  
614.300.3357

[www.msaarch.com](http://www.msaarch.com)

\*\*\*NO PANEL MOLDING TO BE PROVIDED\*\*\*  
 (PANEL MOLDING PICTURED BELOW)



PLAN CODE: CT1-2

MANUFACTURER: GUNLOCKE

MODEL #: KENNSINGTON KNBSL4896 END  
 PANEL BASE WITH KNTRT4896  
 RECTANGULAR TABLE TOP

SIZE: L96",W48"

QUANTITY: 1

FINISH: NC215 MEDIUM BROWN CHERRY

OPTIONS: OP TOP UV FINISH, GN NO  
 GROMMETS, TN NO TRIM MOLDING

## UNITED STATES COURT OF APPEALS FOR THE SIXTH CIRCUIT

503 POTTER STEWART COURTHOUSE  
 100 EAST FIFTH STREET  
 CINCINNATI, OHIO 45202-3988

ISSUE DATE: SEPTEMBER 1, 2016

## **MSA** Architects

CINCINNATI  
 316 West Fourth Street  
 Floor 6  
 Cincinnati, Ohio 45202  
 513.241.5666

Toll Free 855.241.5666

COLUMBUS  
 580 North Fourth Street  
 Suite 250  
 Columbus, OH 43215  
 614.300.3357

[www.msaarch.com](http://www.msaarch.com)





PLAN CODE: CT1-2A

MANUFACTURER: JSI

MODEL #: WELLINGTON WE8JRP4-3672  
WOM

SIZE: L72",W36"

QUANTITY: 1

FINISH: LEGACY - LGC

OPTIONS: WITHOUT BASE MOLDING,  
FEDERAL EDGE PROFILE

UNITED STATES COURT OF APPEALS  
FOR THE SIXTH CIRCUIT

503 POTTER STEWART COURTHOUSE  
100 EAST FIFTH STREET  
CINCINNATI, OHIO 45202-3988

ISSUE DATE: SEPTEMBER 1, 2016

**MSA** Architects

CINCINNATI  
316 West Fourth Street  
Floor 6  
Cincinnati, Ohio 45202  
513.241.5666

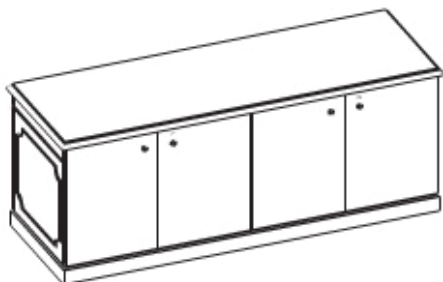
Toll Free 855.241.5666

COLUMBUS  
580 North Fourth Street  
Suite 250  
Columbus, OH 43215  
614.300.3357

[www.msaarch.com](http://www.msaarch.com)



STYLE



CONFIGURATION

PLAN CODE: CR-3B

MANUFACTURER: GUNLOCKE

MODEL #: KENNSINGTON KNFSC2674-55

SIZE: D26", W74", H29.5"

QUANTITY: 1

FINISH: MEDIUM BROWN CHERRY NC215

OPTIONS: NONE



## UNITED STATES COURT OF APPEALS FOR THE SIXTH CIRCUIT

503 POTTER STEWART COURTHOUSE  
100 EAST FIFTH STREET  
CINCINNATI, OHIO 45202-3988

ISSUE DATE: SEPTEMBER 1, 2016

## **MSA** Architects

CINCINNATI  
316 West Fourth Street  
Floor 6  
Cincinnati, Ohio 45202  
513.241.5666

Toll Free 855.241.5666

COLUMBUS  
580 North Fourth Street  
Suite 250  
Columbus, OH 43215  
614.300.3357

[www.msaarch.com](http://www.msaarch.com)



PLAN CODE: L4-TR

MANUFACTURER: UTTERMOST

MODEL #: ARCELLA 28891 FLOOR LAMP

SIZE: H66", DIAM. 18"

QUANTITY: 2

FINISH: BRUSHED BRASS WITH BLACK MARBLE

OPTIONS: NONE

UNITED STATES COURT OF APPEALS  
FOR THE SIXTH CIRCUIT

503 POTTER STEWART COURTHOUSE  
100 EAST FIFTH STREET  
CINCINNATI, OHIO 45202-3988

ISSUE DATE: SEPTEMBER 1, 2016

**MSA** Architects

CINCINNATI  
316 West Fourth Street  
Floor 6  
Cincinnati, Ohio 45202  
513.241.5666

Toll Free 855.241.5666

COLUMBUS  
580 North Fourth Street  
Suite 250  
Columbus, OH 43215  
614.300.3357

[www.msaarch.com](http://www.msaarch.com)



PLAN CODE: L1-TR

MANUFACTURER: UTTERMOST

MODEL #: ARCELLA 27045 TABLE LAMP

SIZE: H37", DIAM. 17"

QUANTITY: 2

FINISH: BRUSHED BRASS WITH BLACK MARBLE

OPTIONS: NONE

UNITED STATES COURT OF APPEALS  
FOR THE SIXTH CIRCUIT

503 POTTER STEWART COURTHOUSE  
100 EAST FIFTH STREET  
CINCINNATI, OHIO 45202-3988

ISSUE DATE: SEPTEMBER 1, 2016

**MSA** Architects

CINCINNATI  
316 West Fourth Street  
Floor 6  
Cincinnati, Ohio 45202  
513.241.5666

Toll Free 855.241.5666

COLUMBUS  
580 North Fourth Street  
Suite 250  
Columbus, OH 43215  
614.300.3357

[www.msaarch.com](http://www.msaarch.com)



PLAN CODE: L2-TR

MANUFACTURER: UTTERMOST

MODEL #: MONROE 27077 TABLE LAMP

SIZE: H34", DIAM. 18"

QUANTITY: 2

FINISH: BRUSHED BRASS

OPTIONS: NONE

UNITED STATES COURT OF APPEALS  
FOR THE SIXTH CIRCUIT

503 POTTER STEWART COURTHOUSE  
100 EAST FIFTH STREET  
CINCINNATI, OHIO 45202-3988

ISSUE DATE: SEPTEMBER 1, 2016

**MSA** Architects

CINCINNATI  
316 West Fourth Street  
Floor 6  
Cincinnati, Ohio 45202  
513.241.5666

Toll Free 855.241.5666

COLUMBUS  
580 North Fourth Street  
Suite 250  
Columbus, OH 43215  
614.300.3357

[www.msaarch.com](http://www.msaarch.com)



PLAN CODE: L2-C

MANUFACTURER: UTTERMOST

MODEL #: FLANNIGAN 29939-1 TABLE LAMP

SIZE: H27", DIAM. 10"

QUANTITY: 1

FINISH: BRUSHED BRASS

OPTIONS: NONE

UNITED STATES COURT OF APPEALS  
FOR THE SIXTH CIRCUIT

503 POTTER STEWART COURTHOUSE  
100 EAST FIFTH STREET  
CINCINNATI, OHIO 45202-3988

ISSUE DATE: SEPTEMBER 1, 2016

**MSA** Architects

CINCINNATI  
316 West Fourth Street  
Floor 6  
Cincinnati, Ohio 45202  
513.241.5666

Toll Free 855.241.5666

COLUMBUS  
580 North Fourth Street  
Suite 250  
Columbus, OH 43215  
614.300.3357

[www.msaarch.com](http://www.msaarch.com)



PLAN CODE: L1-C  
MANUFACTURER: UTTERMOST  
MODEL #: CAECILIA 26583-1 TABLE LAMP  
SIZE: H33", DIAM. 17"  
QUANTITY: 2  
FINISH: BRUSHED BRASS  
OPTIONS: NONE

UNITED STATES COURT OF APPEALS  
FOR THE SIXTH CIRCUIT

503 POTTER STEWART COURTHOUSE  
100 EAST FIFTH STREET  
CINCINNATI, OHIO 45202-3988

ISSUE DATE: SEPTEMBER 1, 2016

**MSA** Architects

CINCINNATI  
316 West Fourth Street  
Floor 6  
Cincinnati, Ohio 45202  
513.241.5666

Toll Free 855.241.5666

COLUMBUS  
580 North Fourth Street  
Suite 250  
Columbus, OH 43215  
614.300.3357

[www.msaarch.com](http://www.msaarch.com)



PLAN CODE: L4-C

MANUFACTURER: UTTERMOST

MODEL #: TORANO 28725 FLOOR LAMP

SIZE: H66", DIAM. 19"

QUANTITY: 1

FINISH: ANTIQUED GOLD LEAF

OPTIONS: NONE

UNITED STATES COURT OF APPEALS  
FOR THE SIXTH CIRCUIT

503 POTTER STEWART COURTHOUSE  
100 EAST FIFTH STREET  
CINCINNATI, OHIO 45202-3988

ISSUE DATE: SEPTEMBER 1, 2016

**MSA** Architects

CINCINNATI  
316 West Fourth Street  
Floor 6  
Cincinnati, Ohio 45202  
513.241.5666

Toll Free 855.241.5666

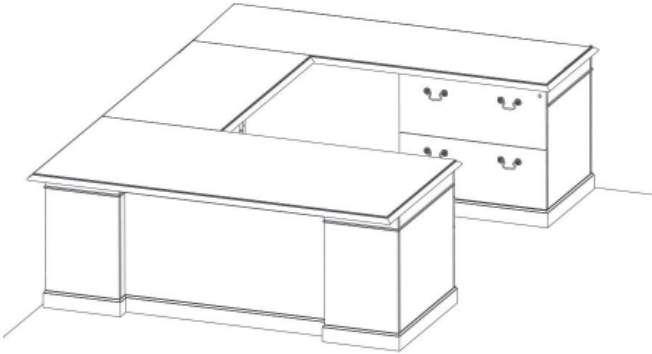
COLUMBUS  
580 North Fourth Street  
Suite 250  
Columbus, OH 43215  
614.300.3357

[www.msaarch.com](http://www.msaarch.com)





STYLE



CONFIGURATION

PLAN CODE: D1-3B1R

MANUFACTURER: GUNLOCKE

MODEL #: KENNSINGTON

KNDR03874L-3 (SINGLE  
PEDESTAL DESK LEFT HAND BBF  
AND GROMMET)KNBRG2646F (BRIDGE FULL  
MODESTY WITH GROMMET)KNSPC2674R-4N (SINGLE  
PEDESTAL CREDENZA NO  
MODESTY, RH LATERAL FILE AND  
GROMMET)SIZE: D38", W74", H29.5" FRONT  
D26", W46", H29.5" BRIDGE RETURN  
D26", W74", H29.5" CREDENZA

QUANTITY: 1

FINISH: NC215 MEDIUM BROWN CHERRY

OPTIONS: TNC PLAIN CHERRY VENEER TOPS,  
FNC PLAIN CHERRY VENEER FRONTS,  
VST VENEER DIRECTION, TN NO BOX  
TRIM MOLDING, TRZ TRADITIONAL  
BRONZE PULLS, (QTY:3) GZ BRONZE  
GROMMETS, WN, LY RMB BLACK  
LOCKS, OP UV TOP FINISHUNITED STATES COURT OF APPEALS  
FOR THE SIXTH CIRCUIT503 POTTER STEWART COURTHOUSE  
100 EAST FIFTH STREET  
CINCINNATI, OHIO 45202-3988

ISSUE DATE: SEPTEMBER 1, 2016

**MSA** ArchitectsCINCINNATI  
316 West Fourth Street  
Floor 6  
Cincinnati, Ohio 45202  
513.241.5666

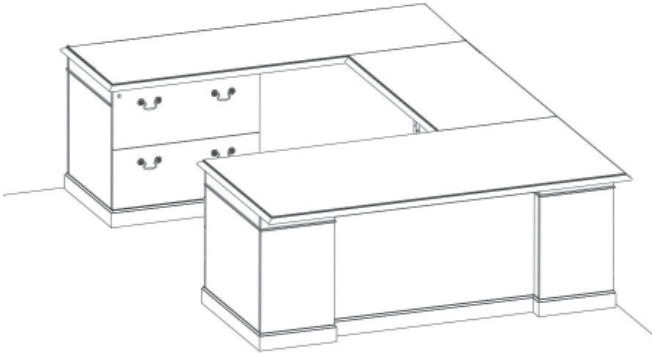
Toll Free 855.241.5666

COLUMBUS  
580 North Fourth Street  
Suite 250  
Columbus, OH 43215  
614.300.3357

www.msaarch.com



STYLE



## CONFIGURATION

PLAN CODE: D1-3B1L

MANUFACTURER: GUNLOCKE

MODEL #: KENNSINGTON

KNDR03874R-3 (SINGLE  
PEDESTAL DESK RIGHT HAND  
BBF AND GROMMET)KNBRG2646F (BRIDGE FULL  
MODESTY WITH GROMMET)KNSPC2674L-4N (SINGLE  
PEDESTAL CREDENZA NO  
MODESTY, LH LATERAL FILE AND  
GROMMET)SIZE: D38", W74", H29.5" FRONT  
D26", W46", H29.5" BRIDGE RETURN  
D26", W74", H29.5" CREDENZA

QUANTITY: 1

FINISH: NC215 MEDIUM BROWN CHERRY

OPTIONS: TNC PLAIN CHERRY VENEER TOPS,  
FNC PLAIN CHERRY VENEER FRONTS,  
VST VENEER DIRECTION, TN NO BOX  
TRIM MOLDING, TRZ TRADITIONAL  
BRONZE PULLS, (QTY:3) GZ BRONZE  
GROMMETS, WN, LY RMB BLACK  
LOCKS, OP UV TOP FINISHUNITED STATES COURT OF APPEALS  
FOR THE SIXTH CIRCUIT503 POTTER STEWART COURTHOUSE  
100 EAST FIFTH STREET  
CINCINNATI, OHIO 45202-3988

ISSUE DATE: SEPTEMBER 1, 2016

**MSA** ArchitectsCINCINNATI  
316 West Fourth Street  
Floor 6  
Cincinnati, Ohio 45202  
513.241.5666

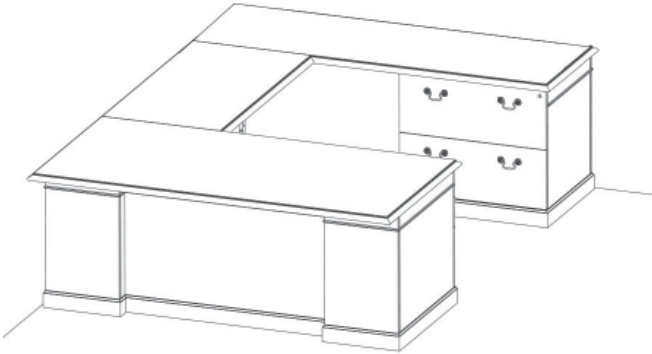
Toll Free 855.241.5666

COLUMBUS  
580 North Fourth Street  
Suite 250  
Columbus, OH 43215  
614.300.3357

www.msaarch.com



STYLE



## CONFIGURATION

PLAN CODE: D1-3BR

MANUFACTURER: GUNLOCKE

MODEL #: KENNSINGTON

KNDR04480L-3 (SINGLE PEDESTAL DESK LEFT HAND BBF AND GROMMET)

KNBRG2652F (BRIDGE FULL MODESTY WITH GROMMET)

KNSPC2674R-4N (SINGLE PEDESTAL CREDENZA NO MODESTY, RH LATERAL FILE AND GROMMET)

SIZE: D44", W80", H29.5" FRONT  
D26", W52", H29.5" BRIDGE RETURN  
D26", W74", H29.5" CREDENZA

QUANTITY: 1

FINISH: NC215 MEDIUM BROWN CHERRY

OPTIONS: TNC PLAIN CHERRY VENEER TOPS,  
FNC PLAIN CHERRY VENEER FRONTS,  
VST VENEER DIRECTION, TN NO BOX  
TRIM MOLDING, TRZ TRADITIONAL  
BRONZE PULLS, (QTY:3) GZ BRONZE  
GROMMETS, WN, LY RMB BLACK  
LOCKS, OP UV TOP FINISH

UNITED STATES COURT OF APPEALS  
FOR THE SIXTH CIRCUIT

503 POTTER STEWART COURTHOUSE  
100 EAST FIFTH STREET  
CINCINNATI, OHIO 45202-3988

ISSUE DATE: SEPTEMBER 1, 2016

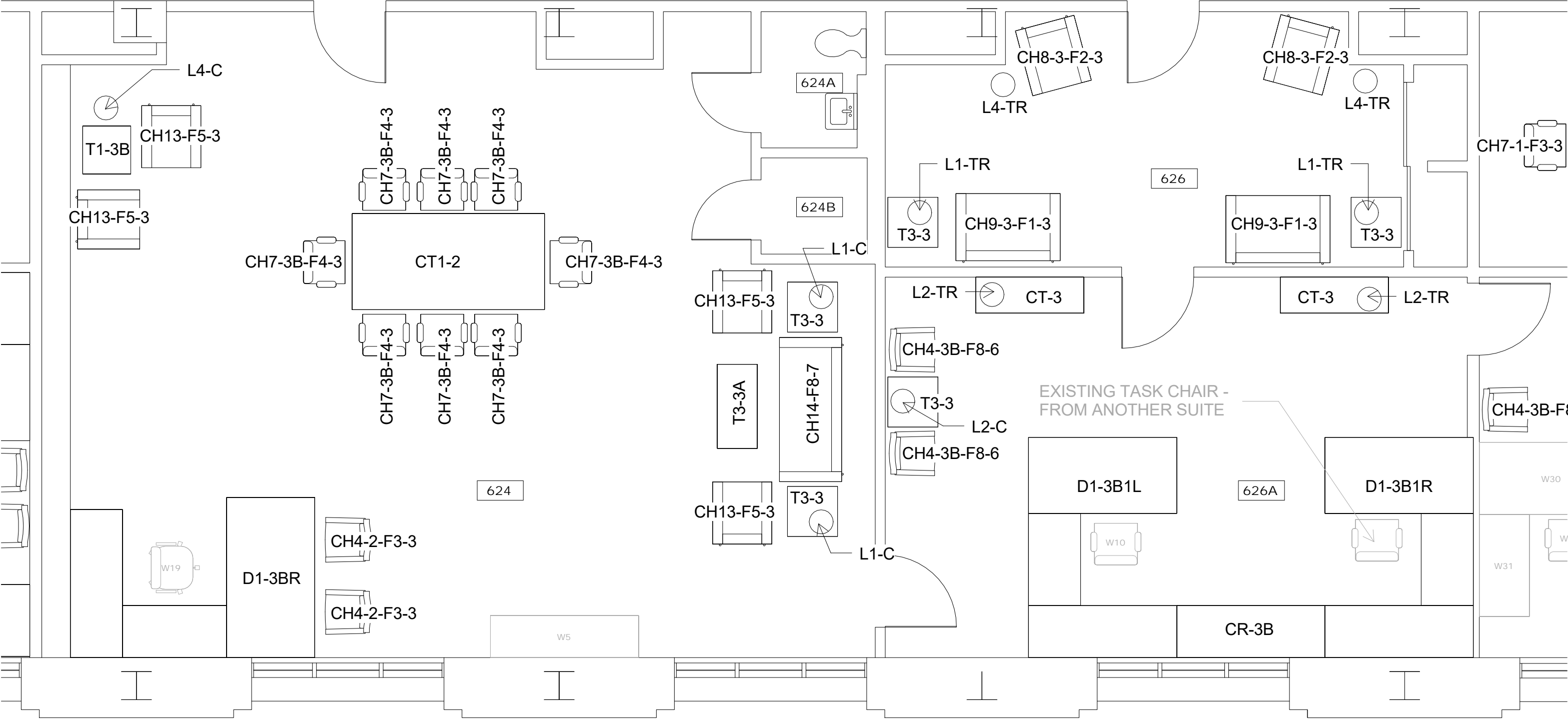
**MSA** Architects

CINCINNATI  
316 West Fourth Street  
Floor 6  
Cincinnati, Ohio 45202  
513.241.5666

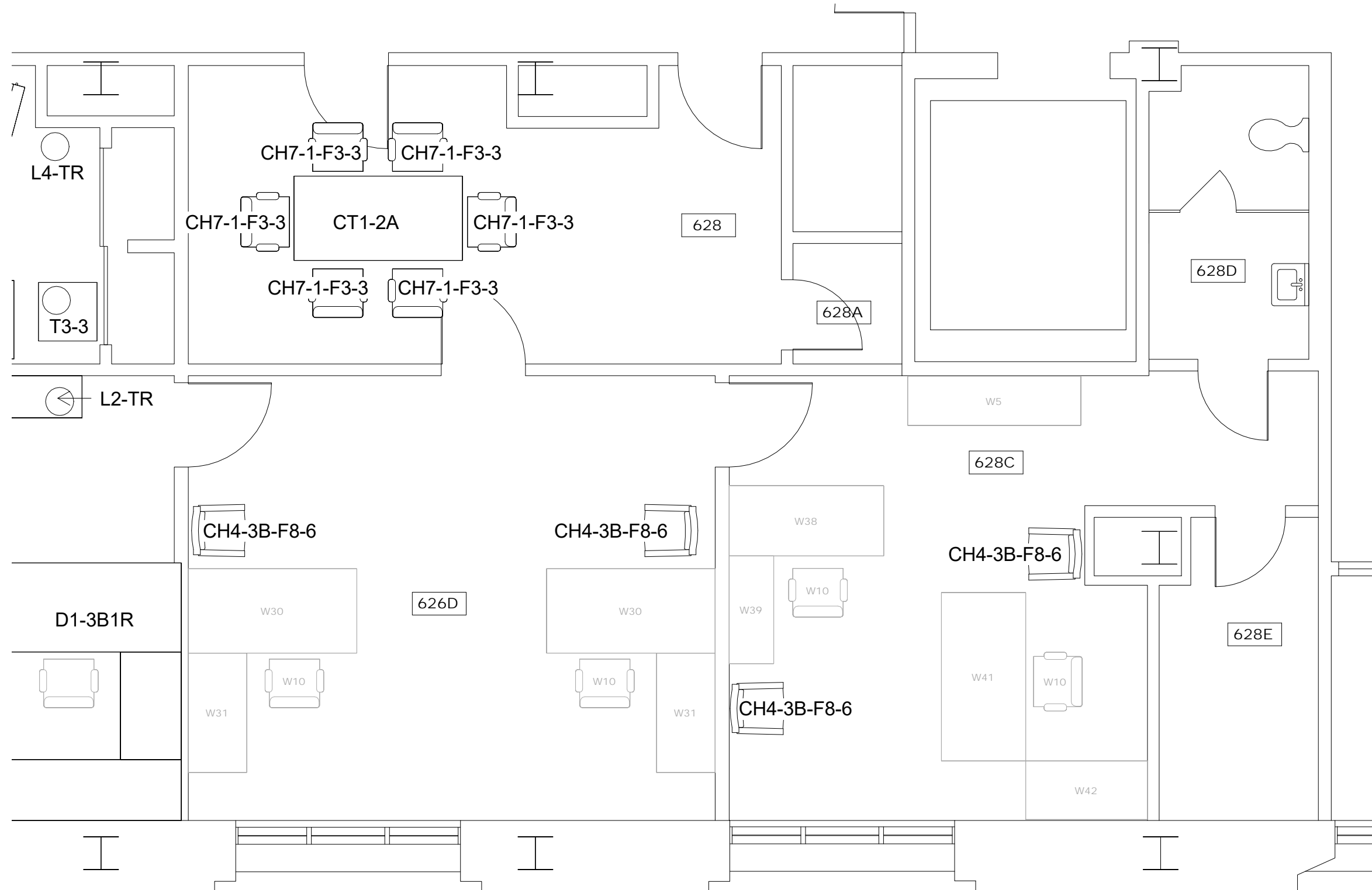
Toll Free 855.241.5666

COLUMBUS  
580 North Fourth Street  
Suite 250  
Columbus, OH 43215  
614.300.3357

www.msaarch.com



\*\*\* EXISTING FURNITURE TO REMAIN IN HALFTONE \*\*\*



\*\*\* EXISTING FURNITURE TO REMAIN IN HALFTONE \*\*\*