

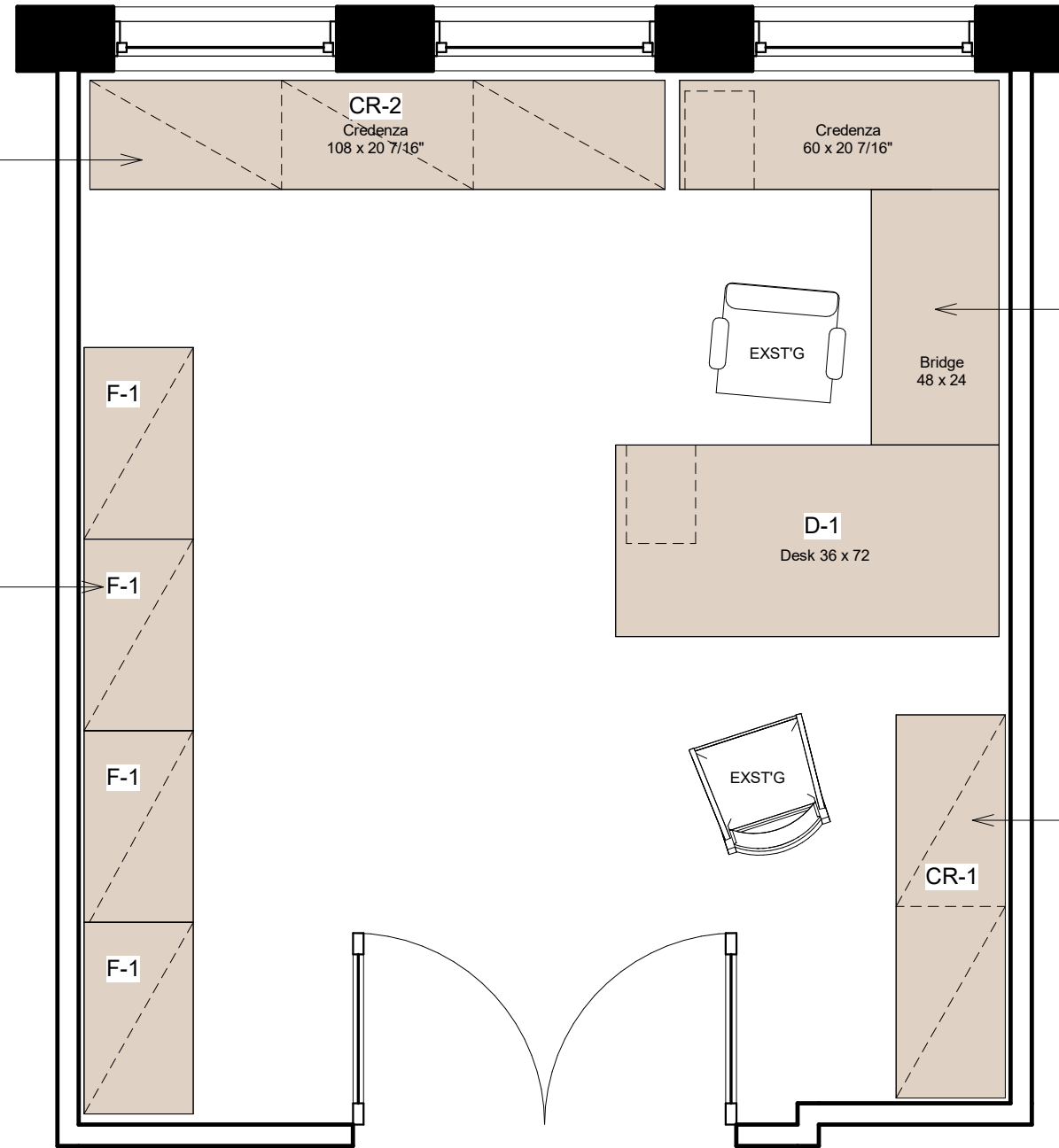
CR-2 CUSTOM FILE CREDENZA

CREDENZA: 108" x 20 7/16"
(3) 2-High files with common top

F-1 FOUR DRAWER FILE

LATERAL FILE: 36" x 20 7/16" x 54"

Note:
No base or edge profile on sides
to allow files to fit together



D-1 U UNIT

DESK: 36" X 72" Single Ped Right
BRIDGE: 48" x 24" Half Modesty
CREDENZA: 60" x 20 7/16" File/File Left

CR-1 CREDENZA

72" x 20 7/16" x 30"
Credenza with Double Lateral File
2 Drawers High

TYPICAL ALL PIECES

Top Material	W	Wood Veneer top and body
Finish	Custom	Stain-to-match Court's sample
Base Molding	BM3600	Wilmington
Decorative Molding	M2900	Arlington
Pull	JEF	Jefferson, Brass
Drawer Construction	STD	Standard
Grommets	-	None
Filing	Letter, front-to-back	



Traverse City, MI

Design sketch prepared by:

The Office of the Circuit Executive
Space & Facilities
503 Potter Stewart U.S. Courthouse
Cincinnati, OH 45202

**FURNITURE PLAN at
Judicial Assistant's Office
FP.01-A**

ISSUED FOR FURNITURE QUOTE

Scale: 3/8" = 1' - 0"

Date: 4/17/2023