**SPECIFICATIONS:**

MANUFACTURER: KNOLL TEXTILES

STYLE: CAT'S CRADLE

COLOR: 9 SHADOW

DETAILS: 35.0% Post Industrial Recycled Polyester, 56.0%
56.0% Eco-Intelligent Polyester, 9.0% Virgin Polyester
100,000 Double Rubs Wyzenbeek
54" Wide
Repeat - 3.5" Vertical, 3.5" Horizontal

SUFFICIENT STOCK IS NOT AVAILABLE
DEPOSIT HAS BEEN ISSUED TO BEGIN MANUFACTURING OF FABRIC
PRICE OF THIS FABRIC SHOULD NOT BE INCLUDED IN SPECIFICATIONS

TEXTILE SPECIFICATION

F1-3



SPECIFICATIONS:

MANUFACTURER: JOSEPH NOBLE

STYLE: DAPPER #3150

COLOR: MAYFIELD 07

DETAILS: Width 57.5 inches
100% Bleach Cleanable Polyester
Vertical Repeat NA
Horizontal Repeat 0.75 inches

Fabric to be applied with stripe vertical

SUFFICIENT STOCK IS NOT AVAILABLE
DEPOSIT HAS BEEN ISSUED TO BEGIN MANUFACTURING OF FABRIC
PRICE OF THIS FABRIC SHOULD NOT BE INCLUDED IN SPECIFICATIONS

TEXTILE SPECIFICATION

F1-4



SPECIFICATIONS:

MANUFACTURER: BERNHARDT DESIGN

STYLE: MAKATO 3460

COLOR: SKY 943

DETAILS: 54" WIDE
VERTICAL 10 1/4" REPEAT
HORIZONTAL REPEAT 9"
30"
COTTON
29% POLYESTER
24% NYLON
17% RAYON



SPECIFICATIONS:

MANUFACTURER: BERNHARDT TEXTILES

STYLE: ENVOY 3457

COLOR: CINDER 911

DETAILS: 52% Rayon, 33% polyester, 15% recycled polyester
acrylic backing, stain resistant
100,000 Double Rubs Wyzenbeek
54" Wide
Repeat - 14 1/8" Vertical, 6 3/4" Horizontal

TEXTILE SPECIFICATION

F2-2



SPECIFICATIONS:

MANUFACTURER:	POLLACK
STYLE:	BRIGHTON 4177
COLOR:	SAND 02
DETAILS:	55" WIDE ALL POLYESTER NO REPEAT



SPECIFICATIONS:

MANUFACTURER: PALLAS TEXTILES

STYLE: SURFACE 29.094.191

COLOR: COPPICE

DETAILS: 89% Polyester, 10% Post Consumer Recycled Polyester
 1% Nylon, Crypton Backing
 100,000 Double Rubs Wyzenbeek
 54" Wide
 Repeat - 1/8" Vertical, 1/8" Horizontal



SPECIFICATIONS:

MANUFACTURER: JOSEPH NOBLE

STYLE: TECH FELT 5850

COLOR: DECKLED 09

DETAILS: 100% Polyester

100,000 Double Rubs Wyzenbeek
55" Wide
Repeat - None



SPECIFICATIONS:

MANUFACTURER: DESIGN TEX

STYLE: ALCAZAR 3413

COLOR: 302 SHIRAZ

DETAILS: 100% Vinyl with Resilience Finish
Cotton Knit Polyester Backing
100,000 Double Rubs Wyzenbeek
54" Wide
Repeat - None



SPECIFICATIONS:

MANUFACTURER:	DESIGN TEX
STYLE:	FRIENDLY FAUX 2008
COLOR:	KERRY BLUE 403
DETAILS:	54" wide Repeat - None 100% Nylon Microfiber



SPECIFICATIONS:

MANUFACTURER: ARC COM

STYLE: MOONBEAM 68632

COLOR: GARNET 13

DETAILS: 61% Polyester, 27% Cotton, 11% Rayon, 1% Nylon
Crypton Stain Resistant Finish
150,000 Double Rubs Wyzenbeek
54" Wide
Repeat - None



SPECIFICATIONS:

MANUFACTURER:	POLLACK
STYLE:	LATTITUDE 2377
COLOR:	CHANTERELLE 10
DETAILS:	50% Post-Consumer Recycled Polyester, 32% Nylon, 18% Polyester Stain Resistant Finish, Acrylic Latex Backing 100,000 Double Rubs Wyzenbeek 54" Wide Repeat - 5 3/8" High



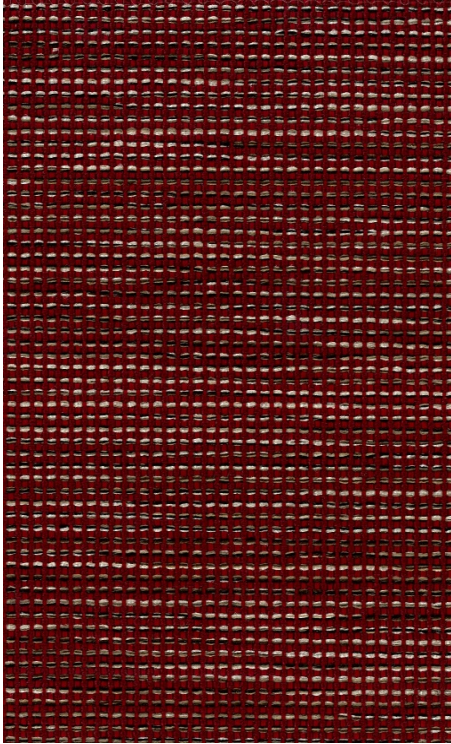
SPECIFICATIONS:

MANUFACTURER: HBF TEXTILES

STYLE: PIVOT

COLOR: 690-21 PECAN

DETAILS: 54% POLYESTER
25% POST-CONSUMER
21% PRE-CONSUMER RECYCLED POLYESTER
58" WIDE
REPEAT: 1 3/8" VERTICAL X 3/4" H



SPECIFICATIONS:

MANUFACTURER: PALLAS TEXTILES

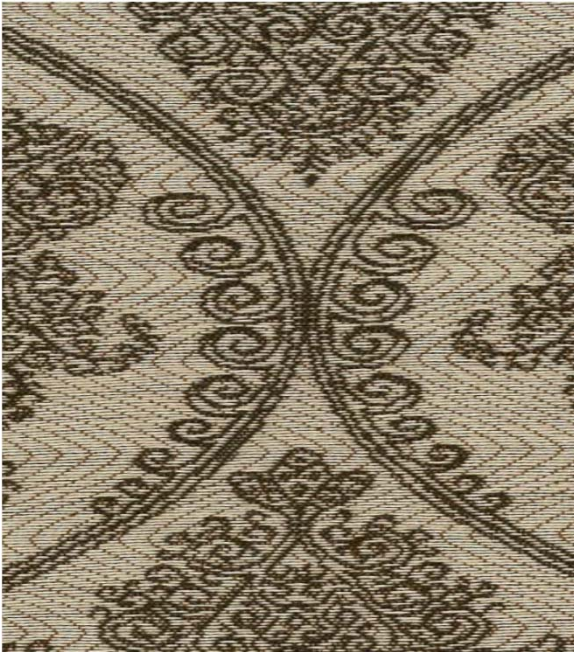
STYLE: SURFACE 29.094.068

COLOR: AMARANTH

DETAILS: 89% Polyester, 10% Post Consumer Recycled Polyester
1% Nylon, Crypton Backing
100,000 Double Rubs Wyzenbeek
54" Wide
Repeat - 1/8" Vertical, 1/8" Horizontal

TEXTILE SPECIFICATION

F5-1



SPECIFICATIONS:

MANUFACTURER: JOSEPH NOBLE

STYLE: RESORT 2850

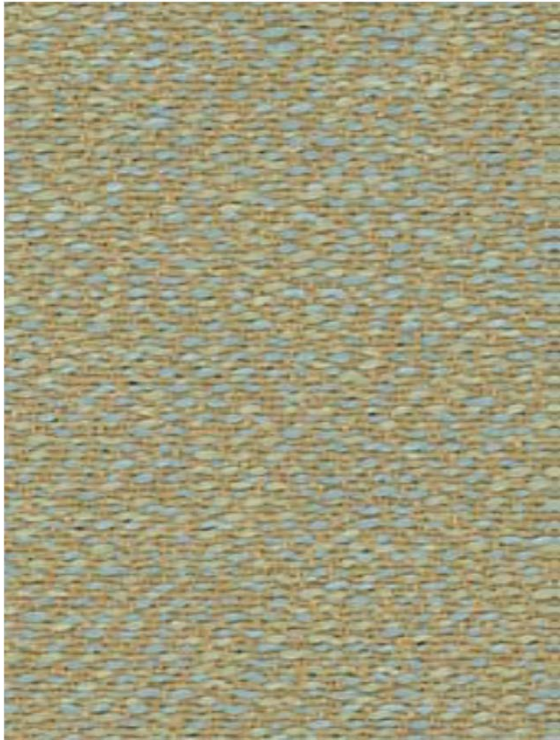
COLOR: LODGE 5

DETAILS: 57.5" WIDE
100% BLEACH CLEANABLE POLYESTER
VERTICAL REPEAT: 9 INCHES
HORIZONTAL REPEAT: 4.88 INCHES

SUFFICIENT STOCK IS NOT AVAILABLE
DEPOSIT HAS BEEN ISSUED TO BEGIN MANUFACTURING OF FABRIC
PRICE OF THIS FABRIC SHOULD NOT BE INCLUDED IN SPECIFICATIONS

TEXTILE SPECIFICATION

F6-4



SPECIFICATIONS:

MANUFACTURER:	POLLACK
STYLE:	PEBBLY 4109
COLOR:	SEAGLASS 04
DETAILS:	58" WIDE ALL RECYCLED POLYESTER NO REPEAT



SPECIFICATIONS:

MANUFACTURER:	POLLACK
STYLE:	LATTITUDE 2377
COLOR:	MIDNIGHT SKY 09
DETAILS:	50% Post-Consumer Recycled Polyester, 32% Nylon, 18% Polyester Stain Resistant Finish, Acrylic Latex Backing 100,000 Double Rubs Wyzenbeek 54" Wide Repeat - 5 3/8" High