

**COURT FURNITURE TO BE REUPHOLSTERED****A21**

DESCRIPTION: SOFA

LOCATION: ROOM 613

QUANTITY 1

DIMENSIONS: 33'Dx82"wide

TASK: UPHOLSTER,  
REPLACE FOAM AND  
WEBBING, IF REQUIRED

FABRIC: DESIGN TEX 690-21  
FRIENDLY FAUX  
KERRY BLUE  
NO NAIL HEADS



LABOR FOR REFINISHING	\$
LABOR FOR REUPHOLSTER	\$
TOTAL LABOR COSTS	\$

**15 YARDS OF FABRIC WILL BE SUPPLIED BY THE COURT**

*(Pick up and delivery should not be included. A separate line item is for pick up and delivery is on the bid form.)*

**COURT FURNITURE TO BE REUPHOLSTERED**

**A24**



DESCRIPTION:      UPHOLSTERED SIDE CHAIR WITH ARMS

LOCATION:            ROOM 453

QUANTITY                                  6

DIMENSIONS:      19.5"Dx23"W

TASK:                CLEAN WOOD, TOUCH UP SCRATCHES, RE-UPHOLSTER  
NO NAIL HEADS

FABRIC:             HBF TEXTILES  
PIVOT                690-21  
PECAN

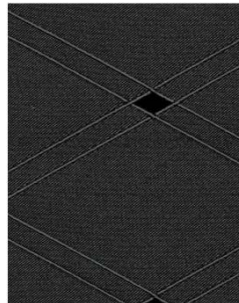
<b>LABOR FOR REFINISHING</b>	<b>\$</b>
<b>LABOR FOR REUPHOLSTER</b>	<b>\$</b>
<b>2 YARDS OF FABRIC PER CHAIR WILL BE SUPPLIED BY THE COURT</b>	
<i>(Pick up and delivery should not be included. A separate line item is for pick up and delivery is on the bid form.)</i>	

**B3**



COLOR: CINDER 911

LABOR FOR REFINISHING	\$
LABOR FOR REUPHOLSTER	\$
<b>2.25 YARDS OF FABRIC PER CHAIR WILL BE SUPPLIED BY THE COURT</b>	
<i>(Pick up and delivery should not be included. A separate line item is for pick up and delivery is on the bid form.)</i>	

**COURT FURNITURE TO BE REUPHOLSTERED****B18**

DESCRIPTION: UPHOLSTERED SIDE CHAIR WITH ARMS

LOCATION: Room 413

QUANTITY 6

DIMENSIONS: 20"x24"w

TASK: CLEAN WOOD, TOUCH UP SCRATCHES, RE-UPHOLSTER

FABRIC: NO NAIL HEADS  
KNOLL TEXTILES  
CAT'S CRADLE  
SHADOW

<b>LABOR FOR REFINISHING</b>	<b>\$</b>
<b>LABOR FOR REUPHOLSTER</b>	<b>\$</b>
<b>2 YARDS OF FABRIC PER CHAIR WILL BE SUPPLIED BY THE COURT</b>	
<i>(Pick up and delivery should not be included. A separate line item is for pick up and delivery is on the bid form.)</i>	

**COURT FURNITURE TO BE REUPHOLSTERED**

**C8**



DESCRIPTION: UPHOLSTERED LOUNGE CHAIR - BURNT ORANGE

LOCATION: ROOM 434

QUANTITY 2

DIMENSIONS: 32"D x 32"W

TASK: REUPHOLSTER CHAIR  
REPLACE FOAM AND WEBBING IF REQUIRED  
NO NAIL HEADS

FABRIC: DESIGNTEX  
ALCAZAR 3413-302

<b>LABOR FOR REFINISHING</b>	<b>\$</b>
<b>LABOR FOR REUPHOLSTER</b>	<b>\$</b>
<b>10 YARDS OF FABRIC PER CHAIR WILL BE SUPPLIED BY THE COURT</b>	
<i>(Pick up and delivery should not be included. A separate line item is for pick up and delivery is on the bid form.)</i>	

**COURT FURNITURE TO BE REUPHOLSTERED**

**D9**



DESCRIPTION: UPHOLSTERED SIDE CHAIR WITH ARMS

LOCATION: ROOM 421

QUANTITY 1

DIMENSIONS: 20"D x 22"W

TASK: CLEAN WOOD, TOUCH UP SCRATCHES, RE-UPHOLSTER  
NO NAIL HEADS

FABRIC: BERNHARDT DESIGN

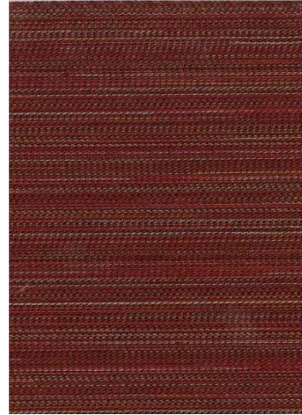
PATTERN: MAKATO 3460  
COLOR SKY 943  
NO NAIL HEADS

LABOR FOR REFINISHING	\$
LABOR FOR REUPHOLSTER	\$
2 YARDS OF FABRIC PER CHAIR WILL BE SUPPLIED BY THE COURT	
(Pick up and delivery should not be included. A separate line item is for pick up and delivery is on the bid form.)	



**COURT FURNITURE TO BE REUPHOLSTERED**

**D9**



DESCRIPTION: UPHOLSTERED SIDE CHAIR WITH ARMS

LOCATION: ROOM 424

QUANTITY 2

DIMENSIONS: 20"D x 22"W

TASK: CLEAN WOOD, TOUCH UP SCRATCHES, RE-UPHOLSTER  
NO NAIL HEADS

FABRIC: ARC COM MOONBEAM AC 68632, GARNET 13  
NO NAIL HEADS

<b>LABOR FOR REFINISHING</b>	<b>\$</b>
<b>LABOR FOR REUPHOLSTER</b>	<b>\$</b>
<b>2 YARDS OF FABRIC PER CHAIR WILL BE SUPPLIED BY THE COURT</b>	
<i>(Pick up and delivery should not be included. A separate line item is for pick up and delivery is on the bid form.)</i>	

**COURT FURNITURE TO BE REUPHOLSTERED**

**E7**



DESCRIPTION: UPHOLSTERED SIDE CHAIR WITH ARMS

LOCATION: ROOM 424A

QUANTITY 2

DIMENSIONS: 20"D x 22"W

TASK: CLEAN WOOD, TOUCH UP SCRATCHES, RE-UPHOLSTER  
NO NAIL HEADS

FABRIC: ARC COM MOONBEAM AC 68632, GARNET 13  
NO NAIL HEADS

<b>LABOR FOR REFINISHING</b>	<b>\$</b>
<b>LABOR FOR REUPHOLSTER</b>	<b>\$</b>
<b>2 YARDS OF FABRIC PER CHAIR WILL BE SUPPLIED BY THE COURT</b>	
<i>(Pick up and delivery should not be included. A separate line item is for pick up and delivery is on the bid form.)</i>	



**COURT FURNITURE TO BE REUPHOLSTERED**

**E9**



DESCRIPTION: UPHOLSTERED 3 SEAT SOFA (BURGUNDY)

LOCATION: ROOM 434

QUANTITY 1

DIMENSIONS: 36"D x 84"W

TASK: UPHOLSTER SOFA, REPLACE FOAM AND WEBBING  
IF REQUIRED

FABRIC: DESIGN TEXT, ALCARAZ,3413-302  
NO NAIL HEADS

**LABOR FOR REFINISHING**

**\$**

**LABOR FOR REUPHOLSTER**

**\$**

**18 YARDS OF FABRIC PER CHAIR WILL BE SUPPLIED BY THE COURT**

*(Pick up and delivery should not be included. A separate line item is  
for pick up and delivery is on the bid form.)*

**COURT FURNITURE TO BE REUPHOLSTERED****E21**

DESCRIPTION:      UPHOLSTERED SIDE CHAIR WITH ARMS

LOCATION:            ROOM 422

QUANTITY                                  6

DIMENSIONS:      19"D x 23"W

TASK:                      CLEAN WOOD, TOUCH UP SCRATCHES, RE-UPHOLSTER  
NO NAIL HEADS

FABRIC:                      PALLAS SURFACE, 29.094. AMARANTH  
NO NAIL HEADS

<b>LABOR FOR REFINISHING</b>	<b>\$</b>
<b>LABOR FOR REUPHOLSTER</b>	<b>\$</b>
<b>2 YARDS OF FABRIC PER CHAIR WILL BE SUPPLIED BY THE COURT</b>	
<i>(Pick up and delivery should not be included. A separate line item is for pick up and delivery is on the bid form.)</i>	

**COURT FURNITURE TO BE REUPHOLSTERED**

**G22**



DESCRIPTION: UPHOLSTERED SIDE CHAIR WITH ARMS - RED

LOCATION: ROOM 634

QUANTITY 2

DIMENSIONS: 20"D x 24"W

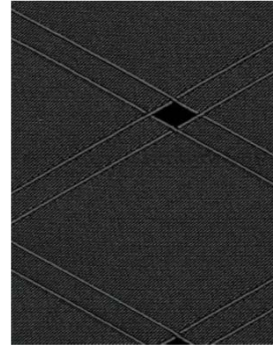
TASK: CLEAN WOOD, TOUCH UP SCRATCHES, RE-UPHOLSTER  
NO NAIL HEADS

FABRIC: JOSEPH NOBLE, DAPPER 3150, MAYFIELD 07  
NO NAIL HEADS

<b>LABOR FOR REFINISHING</b>	<b>\$</b>
<b>LABOR FOR REUPHOLSTER</b>	<b>\$</b>
<b>2 YARDS OF FABRIC PER CHAIR WILL BE SUPPLIED BY THE COURT</b>	
<i>(Pick up and delivery should not be included. A separate line item is for pick up and delivery is on the bid form.)</i>	

## COURT FURNITURE TO BE REUPHOLSTERED

J10



DESCRIPTION: UPHOLSTERED SIDE CHAIR WITH ARMS -

LOCATION: ROOM 430

QUANTITY 4

DIMENSIONS: 20"D x 24"W

TASK: CLEAN WOOD, TOUCH UP SCRATCHES, RE-UPHOLSTER  
NO NAIL HEADS

FABRIC: KNOLL  
CAT'S CRADLE

SHADOW  
NO NAIL HEADS

LABOR FOR REFINISHING	\$
LABOR FOR REUPHOLSTER	\$
<b>2.25 YARDS OF FABRIC PER CHAIR WILL BE SUPPLIED BY THE COURT</b>	
<i>(Pick up and delivery should not be included. A separate line item is for pick up and delivery is on the bid form.)</i>	

**COURT FURNITURE TO BE REUPHOLSTERED**

**J16**



**DESCRIPTION:**

**LOCATION:** ROOM 430 AND 432E

**QUANTITY** 2

**DIMENSIONS:** 24"D x 25"W

**TASK:** CLEAN WOOD, TOUCH UP SCRATCHES, RE-UPHOLSTER  
NO NAIL HEADS

**FABRIC:** PALLAS, SURFACE 29.094, COPPICE 171  
NO NAIL HEADS, BUTTON TUCKED - YES

<b>LABOR FOR REFINISHING</b>	<b>\$</b>
<b>LABOR FOR REUPHOLSTER</b>	<b>\$</b>
<b>2.5 YARDS OF FABRIC PER CHAIR WILL BE SUPPLIED BY THE COURT</b>	
<i>(Pick up and delivery should not be included. A separate line item is for pick up and delivery is on the bid form.)</i>	

**COURT FURNITURE TO BE REUPHOLSTERED**

**J21**



DESCRIPTION:      UPHOLSTERED LOUNGE CHAIR - RED

LOCATION:            ROOM 430

QUANTITY                      2

DIMENSIONS:      30"D x 32"W

TASK:

REUPHOLSTER CHAIR, REPLACE FOAM AND WEBBING  
IF REQUIRED, TOUCH UP WOOD

FABRIC:                DESIGN TEX, ALCAZAR 3413-302

<b>LABOR FOR REFINISHING</b>	<b>\$</b>
<b>LABOR FOR REUPHOLSTER</b>	<b>\$</b>
<b>10 YARDS OF FABRIC PER CHAIR WILL BE SUPPLIED BY THE COURT</b>	
<i>(Pick up and delivery should not be included. A separate line item is for pick up and delivery is on the bid form.)</i>	



**COURT FURNITURE TO BE REUPHOLSTERED**

**J26**



DESCRIPTION: UPHOLSTERED SIDE CHAIR WITHOUT ARMS

LOCATION: ROOM 434

QUANTITY 2

DIMENSIONS: 18"D x 20"W

TASK: CLEAN WOOD, TOUCH UP SCRATCHES, RE-UPHOLSTER  
NO NAIL HEADS

FABRIC: BERNHARDT, ENVOY 3457, CINDER 911

<b>LABOR FOR REFINISHING</b>	<b>\$</b>
<b>LABOR FOR REUPHOLSTER</b>	<b>\$</b>
<b>1.5YARDS OF FABRIC PER CHAIR WILL BE SUPPLIED BY THE COURT</b>	
<i>(Pick up and delivery should not be included. A separate line item is for pick up and delivery is on the bid form.)</i>	

**COURT FURNITURE TO BE REUPHOLSTERED**

**J31**



DESCRIPTION: UPHOLSTERED SIDE CHAIR WITHOUT ARMS - GREEN FABRIC

LOCATION: ROOM 432E

QUANTITY 1

DIMENSIONS: 18"D x 20"W

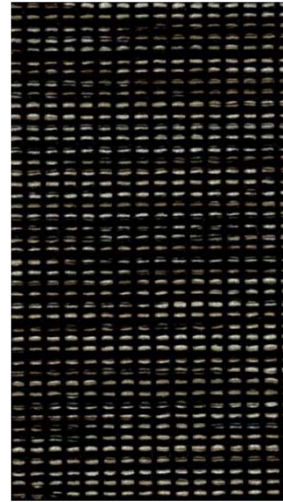
TASK: CLEAN WOOD, TOUCH UP SCRATCHES, RE-UPHOLSTER  
NO NAIL HEADS

FABRIC: BERNHARDT DESIGN, ENVOY 3457, CINDER 911

<b>LABOR FOR REFINISHING</b>	<b>\$</b>
<b>LABOR FOR REUPHOLSTER</b>	<b>\$</b>
<b>2 YARDS OF FABRIC PER CHAIR WILL BE SUPPLIED BY THE COURT</b>	
<i>(Pick up and delivery should not be included. A separate line item is for pick up and delivery is on the bid form.)</i>	

## COURT FURNITURE TO BE REUPHOLSTERED

J36



DESCRIPTION: UPHOLSTERED SIDE CHAIR WITH ARMS - BLUE FABRIC

LOCATION: ROOM 432D AND 432F

QUANTITY 2

DIMENSIONS: 21"D x 24"W

TASK: CLEAN WOOD, TOUCH UP SCRATCHES, RE-UPHOLSTER  
NO NAIL HEADS

FABRIC: PALLAS, SURFACE 29.094, COPPICE 171

**LABOR FOR REFINISHING**

**\$**

**LABOR FOR REUPHOLSTER**

**\$**

**2 YARDS OF FABRIC PER CHAIR WILL BE SUPPLIED BY THE COURT**

*(Pick up and delivery should not be included. A separate line item is for pick up and delivery is on the bid form.)*

## COURT FURNITURE TO BE REUPHOLSTERED

K3



DESCRIPTION: UPHOLSTERED SIDE CHAIR WITH ARMS

LOCATION: ROOM 429

QUANTITY 6

DIMENSIONS: 20"D x 22"W

TASK: CLEAN WOOD, TOUCH UP SCRATCHES, RE-UPHOLSTER  
NO NAIL HEADS

FABRIC: POLLACK, LATITUDE, MIDNIGHT SKY

**LABOR FOR REFINISHING**

**\$**

**LABOR FOR REUPHOLSTER**

**\$**

**2 YARDS OF FABRIC PER CHAIR WILL BE SUPPLIED BY THE COURT**

*(Pick up and delivery should not be included. A separate line item is for pick up and delivery is on the bid form.)*

**COURT FURNITURE TO BE REUPHOLSTERED**

**L10**



DESCRIPTION: UPHOLSTERED SIDE CHAIR WITH ARMS - WHITE VINYL

LOCATION: ROOM 421 AND 421A

QUANTITY 4

DIMENSIONS: 21"D x 24.5"W

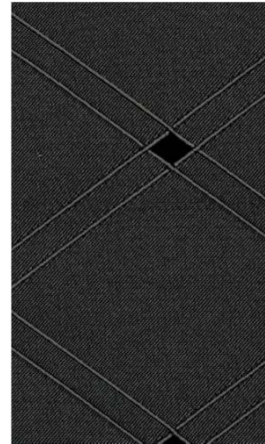
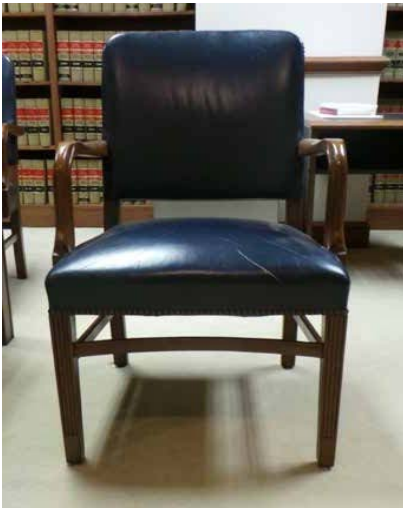
TASK: CLEAN WOOD, TOUCH UP SCRATCHES, RE-UPHOLSTER  
NO NAIL HEADS

FABRIC: BERNHARDT, MAKOTA 3460, SKY 943

LABOR FOR REFINISHING	\$
LABOR FOR REUPHOLSTER	\$
<b>2 YARDS OF FABRIC PER CHAIR WILL BE SUPPLIED BY THE COURT</b>	
<i>(Pick up and delivery should not be included. A separate line item is for pick up and delivery is on the bid form.)</i>	

## COURT FURNITURE TO BE REUPHOLSTERED

L11



DESCRIPTION: UPHOLSTERED SIDE CHAIR WITH ARMS BLUE VINYL

LOCATION: ROOM 445D, 445E AND 445F

QUANTITY 6

DIMENSIONS: 21.5"D x 23"W

TASK: CLEAN WOOD, TOUCH UP SCRATCHES, RE-UPHOLSTER  
NO NAIL HEADS

FABRIC: KNOLL TEXTILES  
CAT'S CRADLE, SHADOW

LABOR FOR REFINISHING	\$
LABOR FOR REUPHOLSTER	\$
<b>2 YARDS OF FABRIC PER CHAIR WILL BE SUPPLIED BY THE COURT</b>	
<i>(Pick up and delivery should not be included. A separate line item is for pick up and delivery is on the bid form.)</i>	



**COURT FURNITURE TO BE REUPHOLSTERED**

**L21**



**DESCRIPTION:**

**DESCRIPTION:** 3 SEAT CAMEL BACK SOFA

**LOCATION:** ROOM 449

**QUANTITY** 1

**DIMENSIONS:** 29"D x 78"W

**TASK:** UPHOLSTER SOFA

NAIL HEADS ARE REQUIRED

**FABRIC:** ROBERT NOBLE, RESORT 2850- LODGE 5



**LABOR FOR REFINISHING**

**\$**

**LABOR FOR REUPHOLSTER**

**\$**

**15 YARDS OF FABRIC PER CHAIR WILL BE SUPPLIED BY THE COURT**

*(Pick up and delivery should not be included. A separate line item is for pick up and delivery is on the bid form.)*

**COURT FURNITURE TO BE REUPHOLSTERED**

**N9**



DESCRIPTION: UPHOLSTERED SIDE CHAIR WITH ARMS - RED VINYL

LOCATION: ROOM 455A

QUANTITY 6

DIMENSIONS: 19"D x 23"W

TASK: CLEAN WOOD, TOUCH UP SCRATCHES, RE-UPHOLSTER  
NO NAIL HEADS

FABRIC: JOSEPH NOBLE, RESORT 2850, LODGE 5

**LABOR FOR REFINISHING**

**\$**

**LABOR FOR REUPHOLSTER**

**\$**

**2 YARDS OF FABRIC PER CHAIR WILL BE SUPPLIED BY THE COURT**

*(Pick up and delivery should not be included. A separate line item is for pick up and delivery is on the bid form.)*

**COURT FURNITURE TO BE REUPHOLSTERED**

**S3**



DESCRIPTION: UPHOLSTERED SIDE CHAIR WITH ARMS - TUFTED MAUVE VINYL

LOCATION: ROOM 618

QUANTITY 2

DIMENSIONS: 20"D x 26"W

TASK: BUTTON TUCKS REQUIRED, CLEAN WOOD, RE-UPHOLSTER CHAIR, TOUCH UP FRAME

FABRIC: DESIGN TEX, ALCAZAR 3413-302  
BUTTON TUCKED AND NAIL HEADS

**LABOR FOR REFINISHING**

**\$**

**LABOR FOR REUPHOLSTER**

**\$**

**3 YARDS OF FABRIC PER CHAIR WILL BE SUPPLIED BY THE COURT**

*(Pick up and delivery should not be included. A separate line item is for pick up and delivery is on the bid form.)*

**COURT FURNITURE TO BE REUPHOLSTERED**

**T11**



DESCRIPTION: UPHOLSTERED SIDE CHAIR WITH ARMS - GREEN FABRIC

LOCATION: ROOM 421

QUANTITY 2

DIMENSIONS: 20"D x 24"W

TASK: CLEAN WOOD, TOUCH UP SCRATCHES, RE-UPHOLSTER  
NO NAIL HEADS

FABRIC: POLLACK, PEBBLY 4109, SEAGLASS 4

**LABOR FOR REFINISHING**

**\$**

**LABOR FOR REUPHOLSTER**

**\$**

**2 YARDS OF FABRIC PER CHAIR WILL BE SUPPLIED BY THE COURT**

*(Pick up and delivery should not be included. A separate line item is for pick up and delivery is on the bid form.)*

**COURT FURNITURE TO BE REUPHOLSTERED**

**T16**



DESCRIPTION: SOFA - GREEN / TAN MULTICOLOR STRIPE FABRIC

LOCATION: ROOM 617C

QUANTITY 1

DIMENSIONS: 23"D x 73"W

TASK: UPHOLSTER SOFA

FABRIC: JOSEPH NOBLE, DAPPER 3150,  
MAYFIELD 07



<b>LABOR FOR REFINISHING</b>	<b>\$</b>
<b>LABOR FOR REUPHOLSTER</b>	<b>\$</b>
<b>12 YARDS OF FABRIC PER CHAIR WILL BE SUPPLIED BY THE COURT</b>	
<i>(Pick up and delivery should not be included. A separate line item is for pick up and delivery is on the bid form.)</i>	

**COURT FURNITURE TO BE REUPHOLSTERED****T17**

DESCRIPTION: UPHOLSTERED LOUNGE CHAIR - MULTICOLOR STRIPE FABRIC

LOCATION: ROOM 617C

QUANTITY 1

DIMENSIONS: 23"D x 25"W

TASK: UPHOLSTER LOUNGE CHAIR

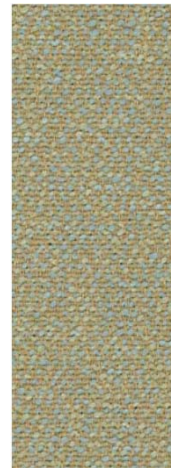
FABRIC: JOSEPH NOBLE, DAPPER 3150, MAYFIELD 07

<b>LABOR FOR REFINISHING</b>	<b>\$</b>
<b>LABOR FOR REUPHOLSTER</b>	<b>\$</b>
<b>7 YARDS OF FABRIC PER CHAIR WILL BE SUPPLIED BY THE COURT</b>	
<i>(Pick up and delivery should not be included. A separate line item is for pick up and delivery is on the bid form.)</i>	



**COURT FURNITURE TO BE REUPHOLSTERED**

**T18**



DESCRIPTION: UPHOLSTERED SIDE CHAIR WITH ARMS - GREEN FABRIC

LOCATION: ROOM 421

QUANTITY 4

DIMENSIONS: 20"D x 24"W

TASK: CLEAN WOOD, TOUCH UP SCRATCHES, RE-UPHOLSTER  
NO NAIL HEADS

FABRIC: POLLACK, PEBBLY 4109, SEAGLASS 4

<b>LABOR FOR REFINISHING</b>	<b>\$</b>
<b>LABOR FOR REUPHOLSTER</b>	<b>\$</b>
<b>2 YARDS OF FABRIC PER CHAIR WILL BE SUPPLIED BY THE COURT</b>	
<i>(Pick up and delivery should not be included. A separate line item is for pick up and delivery is on the bid form.)</i>	

**COURT FURNITURE TO BE REUPHOLSTERED**

**W17**



DESCRIPTION: UPHOLSTERED SIDE CHAIR WITH ARMS

LOCATION: ROOM 432

QUANTITY 2

DIMENSIONS: 21"D x 24"W

TASK: CLEAN WOOD, TOUCH UP SCRATCHES, RE-UPHOLSTER  
NO NAIL HEADS

FABRIC: PALLAS, SURFACE 29.094, COPPICE 171  
NO NAIL HEADS

<b>LABOR FOR REFINISHING</b>	<b>\$</b>
<b>LABOR FOR REUPHOLSTER</b>	<b>\$</b>
<b>2 YARDS OF FABRIC PER CHAIR WILL BE SUPPLIED BY THE COURT</b>	
<i>(Pick up and delivery should not be included. A separate line item is for pick up and delivery is on the bid form.)</i>	

**COURT FURNITURE TO BE REUPHOLSTERED**

**W29**



DESCRIPTION:     UPHOLSTERED SIDE CHAIR WITH ARMS

LOCATION:                     634

QUANTITY                     2

DIMENSIONS:     20"D x 23"W

TASK:                     CLEAN WOOD, TOUCH UP SCRATCHES, RE-UPHOLSTER  
NO NAIL HEADS

FABRIC:                     JOSEPH NOBLE, DAPPER 3150, MAYFIELD

<b>LABOR FOR REFINISHING</b>	<b>\$</b>
<b>LABOR FOR REUPHOLSTER</b>	<b>\$</b>
<b>2 YARDS OF FABRIC PER CHAIR WILL BE SUPPLIED BY THE COURT</b>	
<i>(Pick up and delivery should not be included. A separate line item is for pick up and delivery is on the bid form.)</i>	

**x9**



TASK:	CLEAN WOOD, TOUCH UP SCRATCHES, RE-UPHOLSTER NO NAIL HEADS
FABRIC:	POLLACK FABRICS BRIGHTON 4177 SAND 02

LABOR FOR REFINISHING	\$
LABOR FOR REUPHOLSTER	\$
<b>2 YARDS OF FABRIC PER CHAIR WILL BE SUPPLIED BY THE COURT</b>	
<i>(Pick up and delivery should not be included. A separate line item is for pick up and delivery is on the bid form.)</i>	

## COURT FURNITURE TO BE REUPHOLSTERED

Y13



DESCRIPTION: ARM CHAIR

LOCATION: 613B AND 613 C

QUANTITY 4

DIMENSIONS: 22" X 24"

TASK: CLEAN WOOD, TOUCH UP SCRATCHES, RE-UPHOLSTER

NO NAIL HEADS

FABRIC: POLLACK FABRICS

LATITUDE

**MIDNIGHT SKY**

LABOR FOR REFINISHING	\$
LABOR FOR REUPHOLSTER	\$
<b>2 YARDS OF FABRIC PER CHAIR WILL BE SUPPLIED BY THE COURT</b>	
<i>(Pick up and delivery should not be included. A separate line item is for pick up and delivery is on the bid form.)</i>	

**COURT FURNITURE TO BE REUPHOLSTERED**

**Y13A**



DESCRIPTION: UPHOLSTERED SIDE CHAIR WITH ARMS

LOCATION: ROOM 613A

QUANTITY 2

DIMENSIONS: 19.5"Dx23"W

TASK: CLEAN WOOD, TOUCH UP SCRATCHES, RE-UPHOLSTER  
NO NAIL HEADS

FABRIC: HBF TEXTILES  
PRIVOT 690-21  
PECAN

SEE FABRIC SPECIFICATIONS FOR ADDITIONAL DETAILS

**LABOR FOR REFINISHING**

**\$**

**LABOR FOR REUPHOLSTER**

**\$**

**2 YARDS OF FABRIC PER CHAIR WILL BE SUPPLIED BY THE COURT**

*(Pick up and delivery should not be included. A separate line item is for pick up and delivery is on the bid form.)*



**COURT FURNITURE TO BE REUPHOLSTERED**

**Z304**



DESCRIPTION: TWO SEAT SOFA

LOCATION: ROOM 417B

QUANTITY 1

DIMENSIONS: 52" X 30"

TASK: NAIL HEADS REQUIRED, RE-UPHOLSTER

FABRIC: JOSEPH NOBLE,  
TECHFELT 5850  
DECKLED 9

<b>LABOR FOR REFINISHING</b>	<b>\$</b>
<b>LABOR FOR REUPHOLSTER</b>	<b>\$</b>
<b>7 YARDS OF FABRIC PER CHAIR WILL BE SUPPLIED BY THE COURT</b>	
<i>(Pick up and delivery should not be included. A separate line item is for pick up and delivery is on the bid form.)</i>	

**COURT FURNITURE TO BE REUPHOLSTERED****S&F**

DESCRIPTION: UPHOLSTERED SIDE CHAIR WITH ARMS - BEIGE FABRIC

LOCATION: ROOM 304

QUANTITY 4

DIMENSIONS: 20"D x 23"W

TASK: CLEAN WOOD, TOUCH UP SCRATCHES, RE-UPHOLSTER

NO NAIL HEADS

FABRIC: JOSEPH NOBLE,  
TECHFELT 5850  
DECKLED 9

<b>LABOR FOR REFINISHING</b>	<b>\$</b>
<b>LABOR FOR REUPHOLSTER</b>	<b>\$</b>
<b>2 YARDS OF FABRIC PER CHAIR WILL BE SUPPLIED BY THE COURT</b>	
<i>(Pick up and delivery should not be included. A separate line item is for pick up and delivery is on the bid form.)</i>	

**COURT FURNITURE TO BE REUPHOLSTERED**

**S&F(4)**



LOCATION: ROOM 304

QUANTITY 4

DIMENSIONS: 20"D x 23"W

TASK: CLEAN WOOD, TOUCH UP SCRATCHES, RE-UPHOLSTER

NO NAIL HEADS

FABRIC: JOSEPH NOBLE,  
TECHFELT 5850  
DECKLED 9

**LABOR FOR REFINISHING**

**\$**

**LABOR FOR REUPHOLSTER**

**\$**

**1 YARDS OF FABRIC PER CHAIR WILL BE SUPPLIED BY THE COURT**

*(Pick up and delivery should not be included. A separate line item is for pick up and delivery is on the bid form.)*